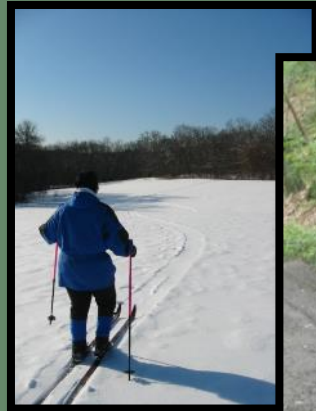
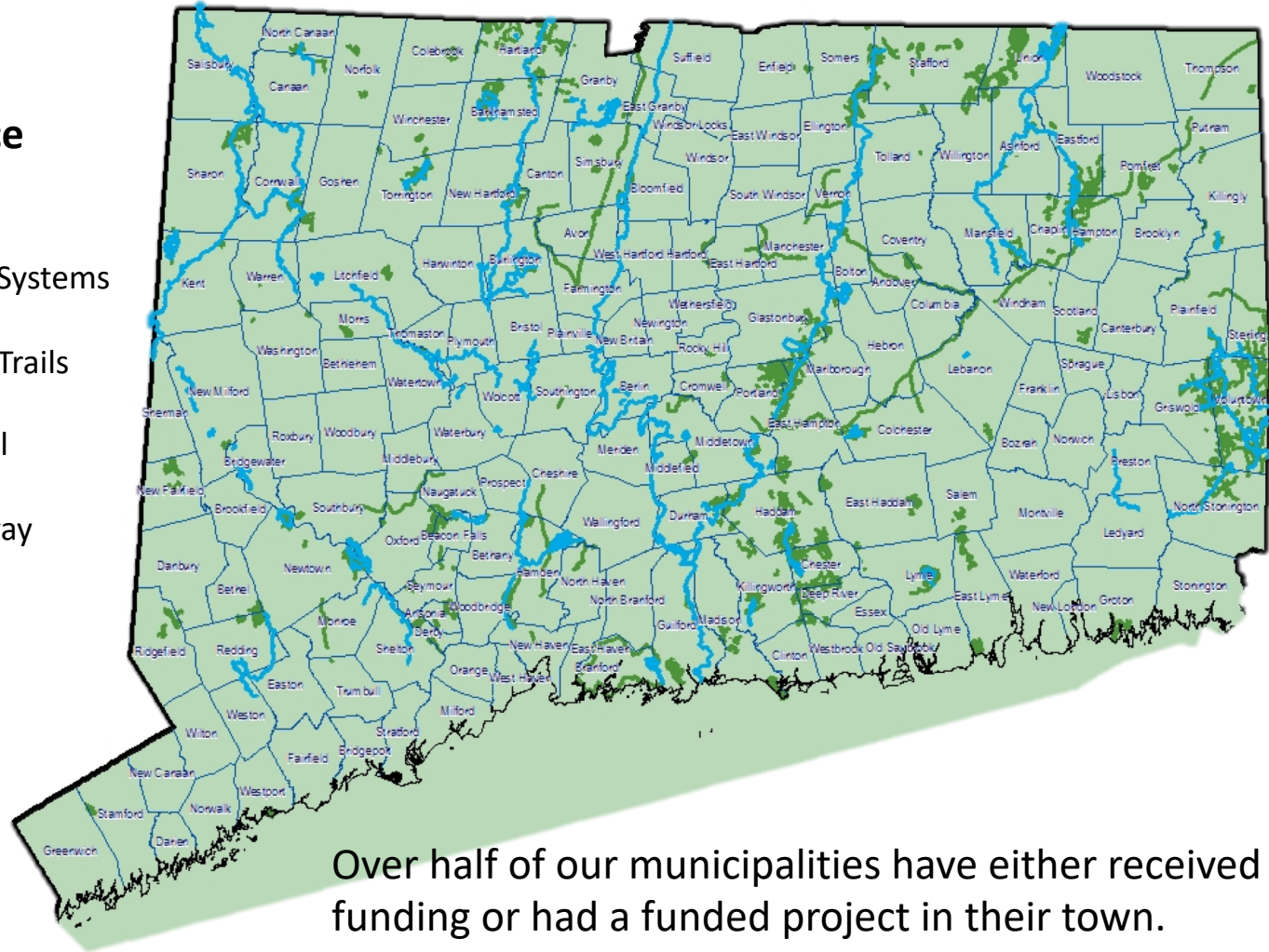


Look What We've Done!!



CT's Recreational Trails Program

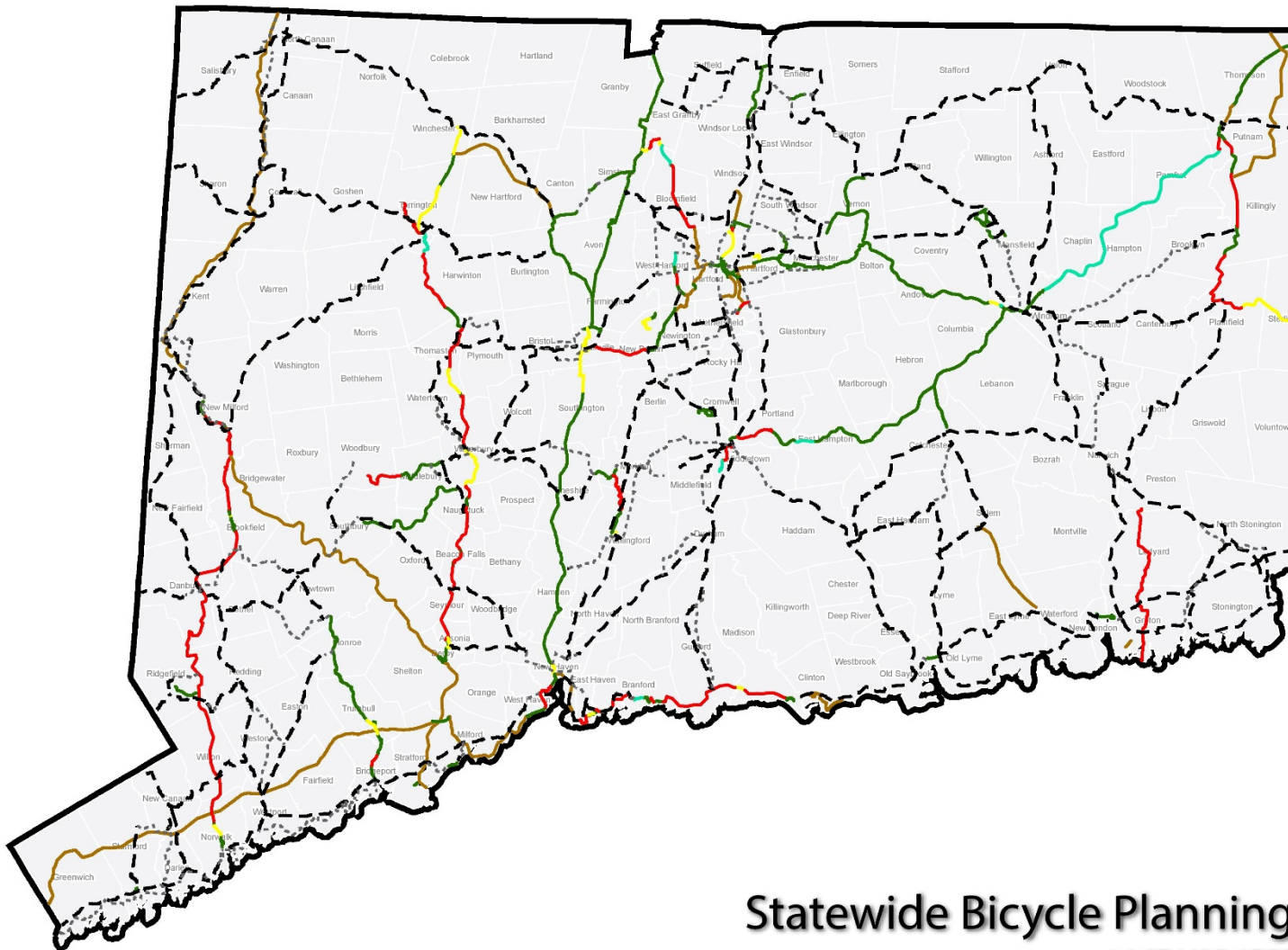
- ❖ **Grants**
- ❖ **Technical Assistance**
- ❖ **Outreach**
- ❖ State Park & Forest Trail Systems
- ❖ CFPB Blue Blazed Hiking Trails
- ❖ Norwalk River Valley Trail
- ❖ Naugatuck River Greenway
- ❖ Shoreline Greenway
- ❖ CT Trails Day
- ❖ CT Trail Census



Connecticut Department of Energy
and Environmental Protection
Division of State Parks



CTDOT's State Mapping



On-Road Bike Network

- State Maintained Road
- Municipal Maintained Road

Trail Status

- Constructed
- In Construction
- In Design
- Planned
- Conceptual

Disclaimer

The data presented here is for informational purposes only. The data is not to be used in legal documents or proceedings. The Connecticut Department of Transportation makes every effort to ensure the data is current and accurate. Neither the State of Connecticut, nor the Connecticut Department of Transportation, nor any of its employees, makes any warranty, expressed or implied, including the warranties of merchantability and fitness for a particular purpose or assumes any legal liability or responsibility for the accuracy, completeness, or usefulness of the data. Reliance on the data is at the user's own risk.

Statewide Bicycle Planning Network

LAST UPDATED: MAY 14, 2019



CT Recreational Trails Program

- ❖ Federal Program 2007-2014 distributed about \$800K in much smaller increments.
- ❖ Much more red tape at an increasingly underfunded DEEP.
- ❖ CT is the only state to have a State Bond Funded Program.
- ❖ Much expanded from the federal programs do not fund feasibility and design.
- ❖ From 2015-2019 we have distributed \$10 million dollars to 69 communities.
- ❖ The program is an unqualified success and there is still a huge unfunded demand of over \$10 million in projects.
- ❖ An alliance of the CGC, CFPA, B/WCT and other advocates were able to get this \$3M in funding once again in the bonding bill.
- ❖ The CT Legislature has not voted on this bonding package yet for 2021. **Contact your legislators to make sure to vote for this funding.**



Berlin Pistol Creek





Stanley Quarter Trails New Britain



Torrington – Naugatuck River Greenway

Courtesy of Anchor Engineering



East Hampton Air Line State Park Trail

Courtesy of Anchor Engineering



TRAIL ACCESS INFORMATION



Hiking



Biking



Portapotty



Pets on Leash



Horseback Riding



Cross Country Skiing



No Motorized Vehicles



Funded by:



thelastgreenvalley.org
ct.gov/deep



Air Line State Park Putnam Station Trail

Putnam Kiosk to Covey Road

Linear Trail - There are no fees for visiting the trail

Length	4.4 mi (7.0 km)
Elev Gain	276 ft (84.0 m)
Elev Loss	150 ft (45.7 m)

Pomfret Station Kiosk: 18 car paved parking lot at Pomfret Station, 13 Railroad Avenue (off of Route 169). Parking adjacent to trail, in town owned paved parking lot, west side of Pomfret Town Office, 455 Mashamoquet Road (Route 44).

Pomfret Senior Center: Parking available in rear of town owned paved parking lot at Pomfret Senior Center, 207 Mashamoquet Road (Route 44).

Though the rails are long gone, this rail bed once offered fashionable, rapid transit from New York to Boston. Those who travel the corridor today witness the same inspiring panoramas and absorb the same solitude that has greeted travelers since the line was constructed. Stretching across eastern Connecticut from Thompson to East Hampton, this linear trail dates from the 1870s, and today draws walkers, hikers, horseback riders and bikers from across the state for the views, the relaxation and the solitude.



Grade

Typical Grade	1.8%
6% of trail is	6% to 8.3%
250 ft (82.1 m) is	6% to 8.3%
Standard Ramp Grade	8%



Surface

Surface Type	Concrete
99% of trail is	Paved
1% of trail is	Hard



Cross Slope

Typical Cross Slope	1.1%
5% of trail is	3% to 5%
453 ft (138 m) is	3% to 5%

WARNING: Trail conditions may have changed since October 2017 when this trail was assessed. Temporary obstacles were not mapped.

OBSTRUCTIONS: Obstructions less than 2 in (5 cm) or outside the area 120 in (3m) wide by 120 in (3m) high were not measured. Minimum clearance boundaries were at least 2 in (5 cm) high.



Tread Width

Typical	120 in (304 cm)
Minimum	120 in (304 cm)

This report was generated by HETAP TrailWare, which has been created by Beneficial Designs, Inc.

The Last Green Valley High Efficiency Trail Assessment Process

East Coast Greenway Connecticut Update

East Coast



Greenway[®]
ALLIANCE



**For 27 years we
have connected
people to
places,
Maine to**

Florida
At 3,000 miles and 33%
done, the "Urban
Appalachian Trail" is
becoming the longest
protected biking and walking
path in the United States.





A Multi-Use Facility for Everyone – Why?

- ✓ An integral part of transportation policy
- ✓ Provide “active” transportation opportunities
- ✓ Recreational facilities, or “linear parks”
- ✓ The healthy option
- ✓ Provide pollution and noise abatement
- ✓ Fantastic community amenities
- ✓ Foster tourism & economic development





Grateful Thanks to Friends

Our nonprofit Alliance's work is made possible through the generous support of foundations, corporations, event sponsors, individual donors, and our members. Volunteers (like the Ambassadors above) help lead active events, update signage, and more.



**Thanks to DOT, DEEP, COG's, To
wns**



- ✓ **200 miles**
- ✓ **50.7% complete**
- ✓ **100% signed**



CT Projects

- ✓ \$11 M/Yr. for trails from CTDOT with preference for the ECG spine.
- ✓ 19 designated projects through 2023.
- ✓ 5 of those are slated for 2019.
- ✓ Totals 50 miles of spine trail.
- ✓ \$61 million funded.



2019 Project Designations

- ✓ FCHT New Haven Cycletrack/Water .45m
- ✓ Long Wharf New Haven .73
- ✓ Bloomfield Greenway Phase 1; 1.81m
- ✓ Hop River Windham; .43m
- ✓ Quinebaug River Trail (5) Killingly; .55m

Total 5.18 miles



Hop River Windham/Willima ntic



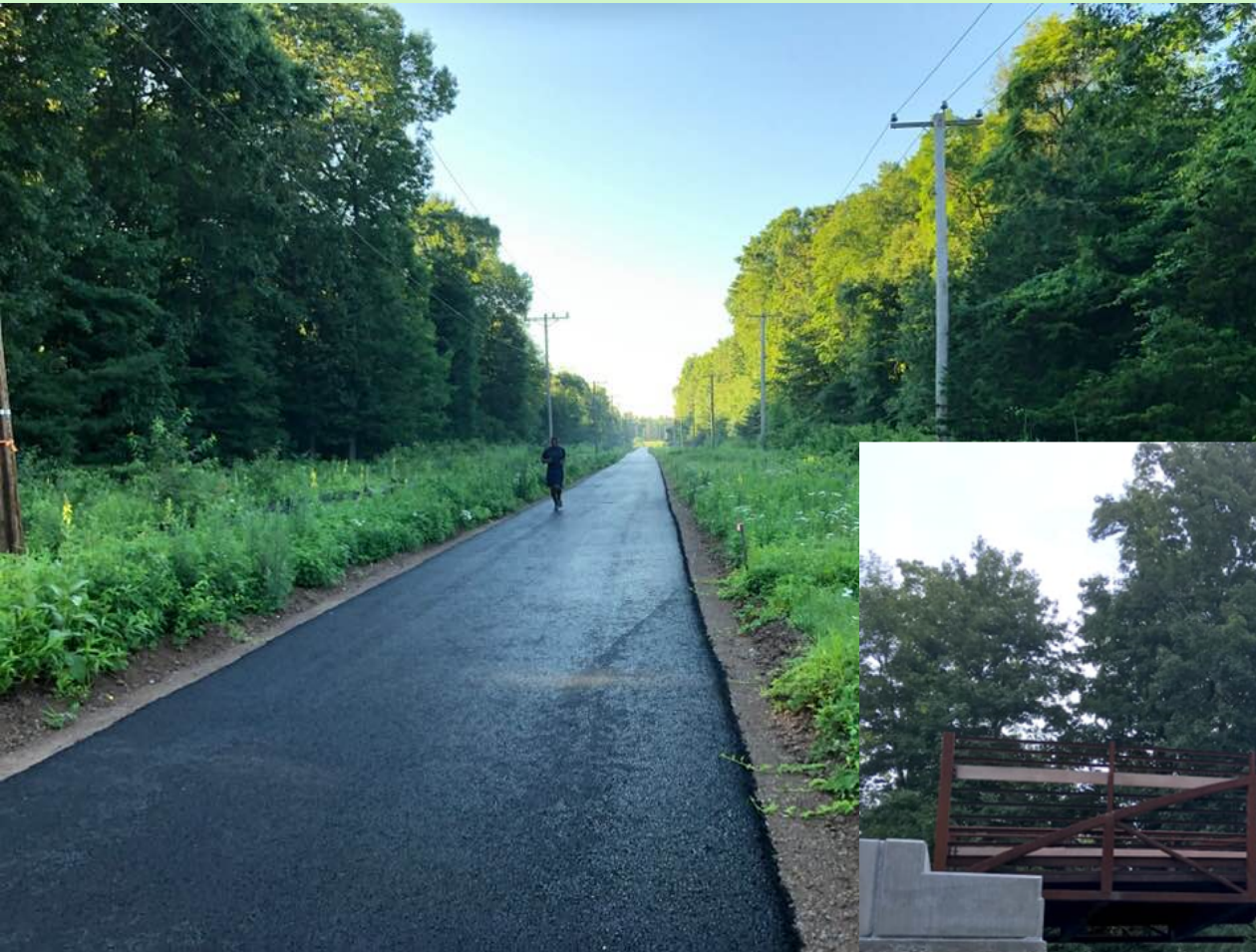
Long Wharf Separated Trail



New Haven – Cycle Track



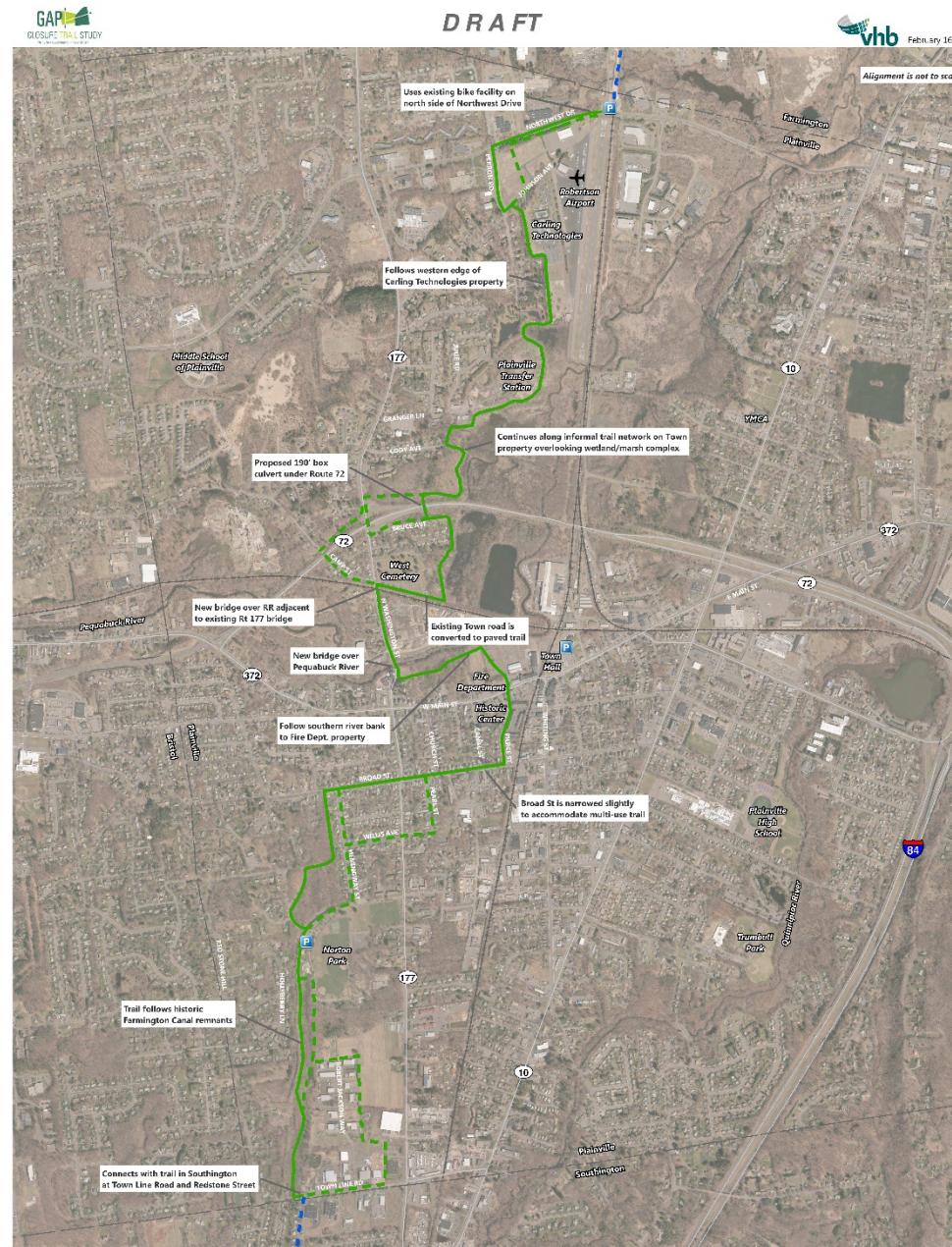
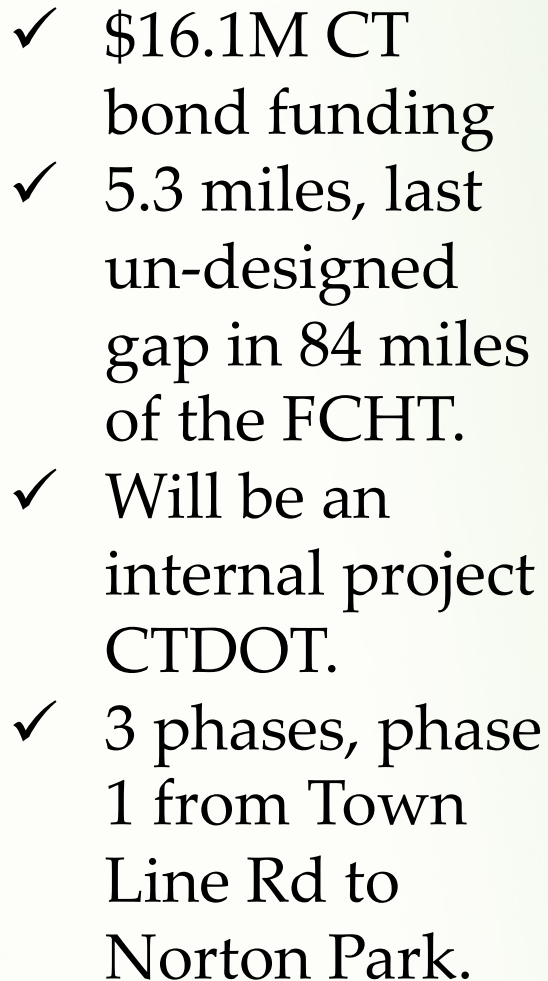
Bloomfield Greenway



EVERSOURCE
ENERGY



A map of the Eastern United States showing the route of the East Coast Greenway. The route is marked by a thick blue line that starts in Maine and runs south through New Hampshire, Massachusetts, Connecticut, New York, New Jersey, Delaware, Maryland, Virginia, North Carolina, South Carolina, Georgia, and Florida. The states are labeled in black text. A legend in the bottom left corner shows a green square with a white tree icon labeled 'East Coast' and a blue square with a white tree icon labeled 'Greenway'.



ECGA Unfunded Gaps in CT

- ✓ Charter Oak East Hartford, P&W
- ✓ Hartford north to Bloomfield, or...
- ✓ Hartford west from the River Trail?
- ✓ Air Line Trail into Putnam
- ✓ Quinebaug River Trail, multiple towns
- ✓ Merritt Pkwy Trail
- ✓ Milford to the Sikorsky Bridge

+/- 50 Miles





Questions?

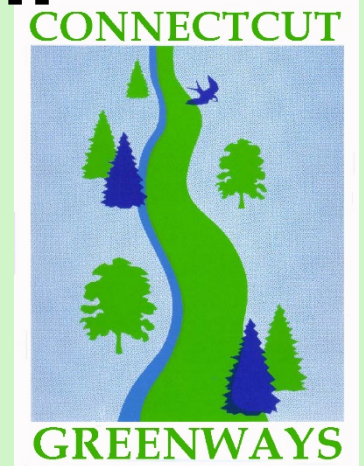
**R. Bruce Donald,
APBP**

Tri-State Greenway Coordinator

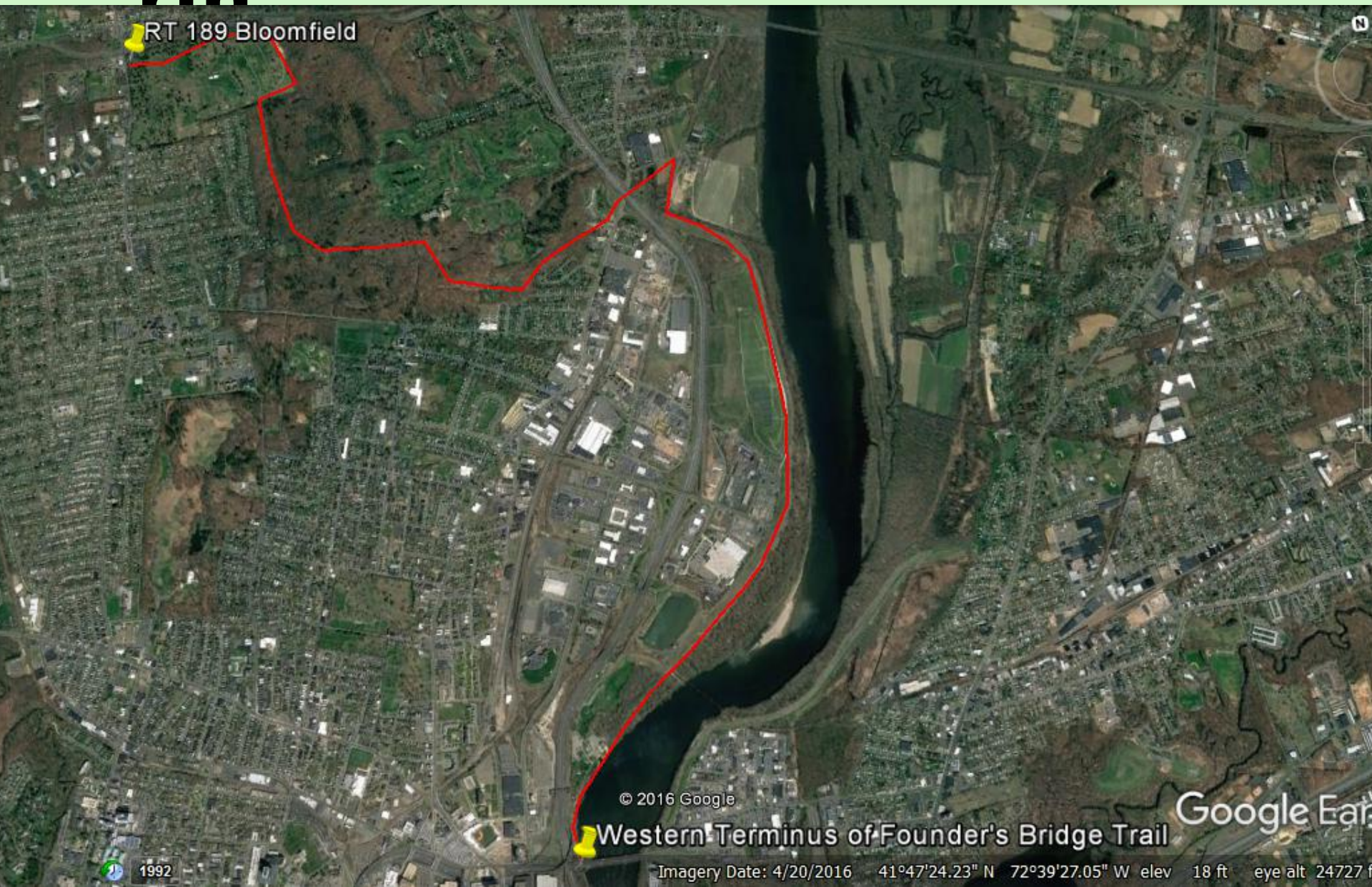
bruce@greenway.org

860.707.2888

Chairman



Hartford River Trail North



FCHT to Hartford

